

**F**IRST & **B**EST  
Since 1987

# HPLC

## YL9100 Plus<sup>+</sup> / YL9300

High Performance Liquid Chromatograph

*Think Smart Work Better*



# YL9100 Plus<sup>+</sup> HPLC (High Performance Liquid Chromatograph)

YL's HPLC is built to provide an exceptional cost/performance ratio. Continued research and development provide high-end performance and features, while a state of the art manufacturing facility ensures outstanding quality. With more than 30 years experience and development, we are proud to present our new HPLC, YL9100 Plus.

*Think Smart Work Better*

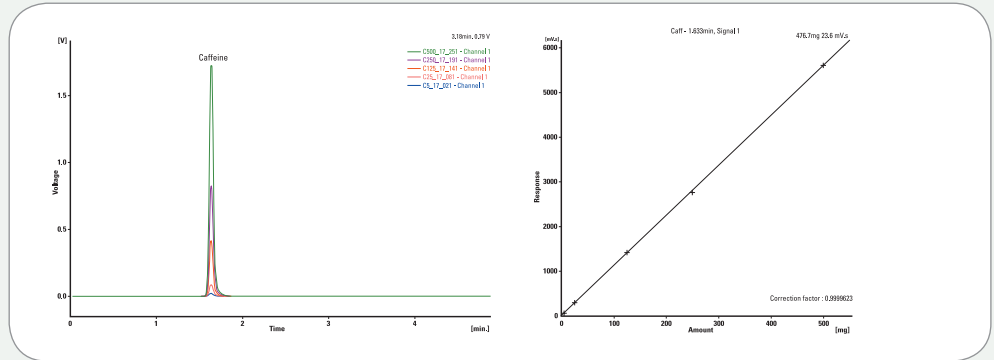
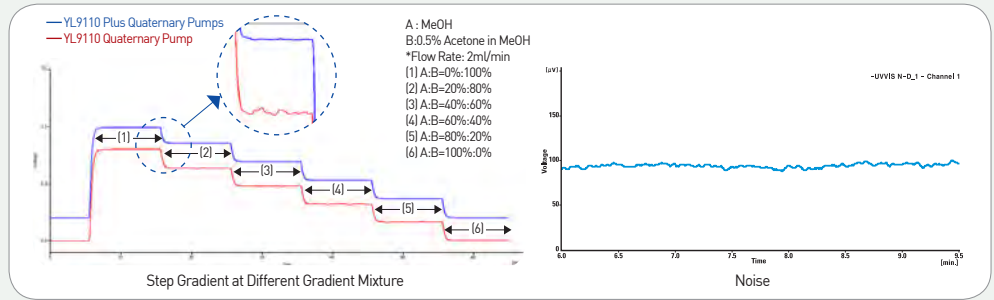
“When the time came to replace the aging HPLC equipment in my laboratory, the YL9100 Plus exceeded my expectations, but not my budget. We now have great looking, modern HPLCs, with the performance and functionality I required, yet at a fraction of the price I expected. The Windows based Chromatography Data System has proved to be a great success with my analysts.”



# Improved Stability

Newly improved YL9110 Plus Quaternary Pump delivers the enhanced mixing performance to provide the very stabilized baseline by reducing noise when it comes to change the solvent composition.

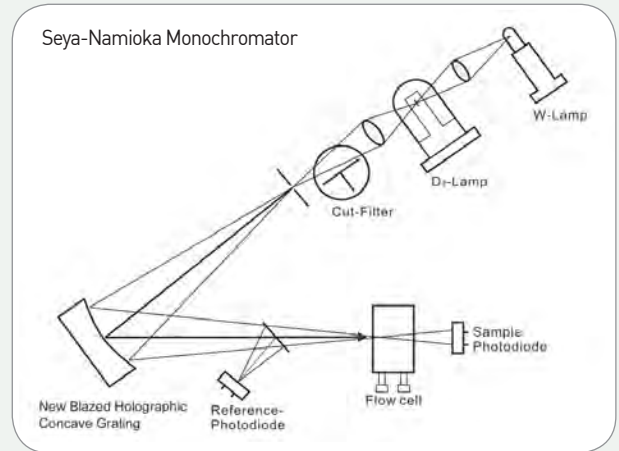
With automatic compressibility compensation minimizing flow rate deviation in the pump, YL9100 Plus HPLC ensures superior RT repeatability by providing accurate and precise flow rates.



# Superior Sensitivity

One of many innovative features of YL9120 UV/Vis Detector is shielded optic design, which protects the optical components from dangerous contaminants such as fine dust or harmful gases, providing high detection sensitivity.

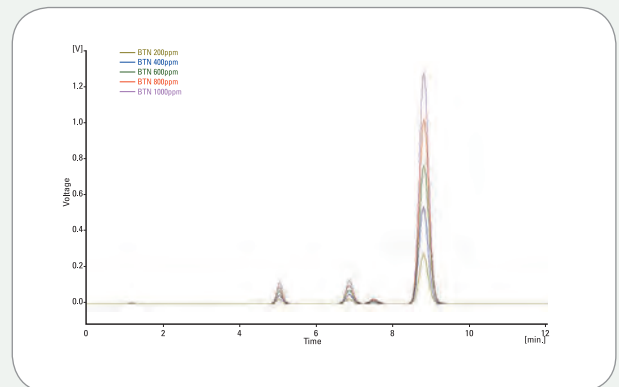
In addition, the Seya-Namioka Monochromator and a new Blazed Holographic Concave Grating enhance light intensity, ensuring high sensitivity over the entire wavelength range.



# Outstanding Reliability

Reliability is an essential feature of the modern HPLC and the YL9100 Plus HPLC absolutely meets this demand.

- YL9101 Vacuum Degasser perfectly removes dissolved gases and air bubbles, with the added convenience of an integrated tray to safely house solvent bottles.
- Automatic rinsing extends the life of the pump seals.
- YL9131 Column Compartment with peltier cooling providing a wide range of temperature from 4°C up to 90°C. Effective temperature control ensures retention time reproducibility and reliable data.

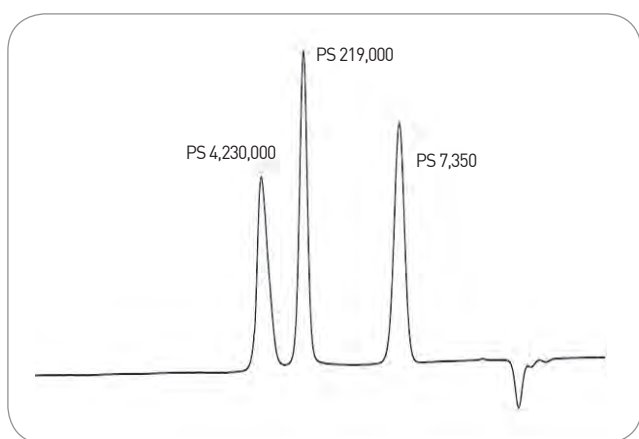


# GPC (Gel Permeation Chromatograph)

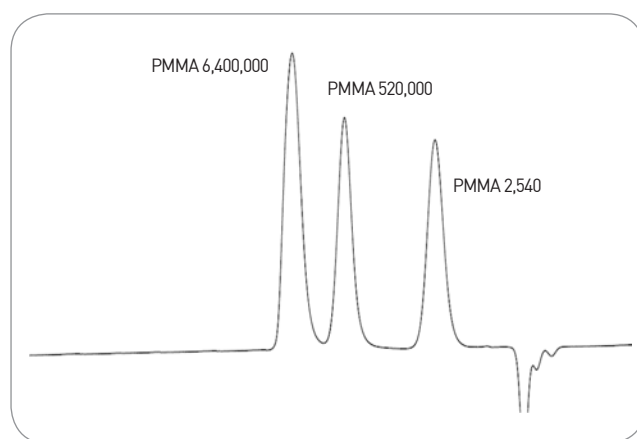
YL GPC system is to provide easy and convenient solution to analyze various natural compounds or synthetic compounds. The standard that is the most similar to the molecular structure of sample has to be chosen, and then dissolve the sample in soluble solvent such as THF, DMF or Alkaline solutions.

Depending on the solution in which the standard and sample were dissolved, choose the GPC columns and analyze the relative molecular weight and the distribution of molecular weight. YL increase the analysis efficiency with providing the mostly common standards and proper columns by the sample.

- **Fat-soluble standards (Polystyrene, Polymethylmethacrylate)**



[Fig. 1] PS analysis by molecular weight (THF)



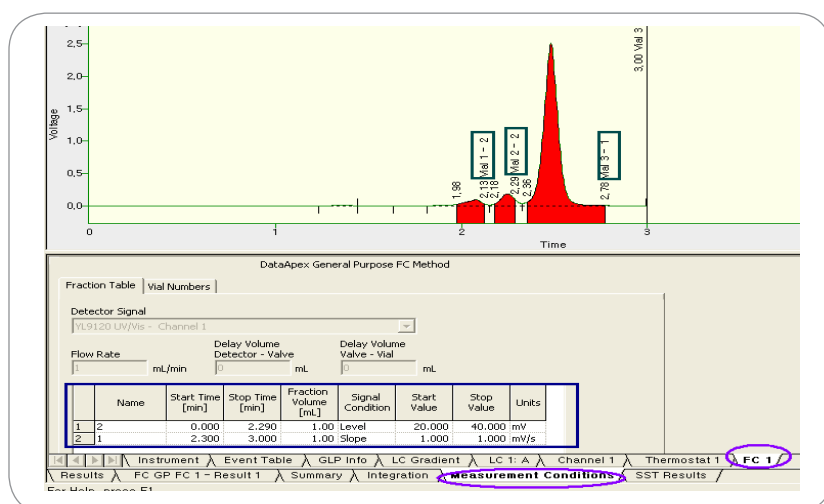
[Fig. 2] PMMA analysis by molecular weight (THF)

## Semi-Preparative HPLC

YL Semi-Preparative HPLC System is to be used for the isolation and purification of a valuable product in the pharmacology, materials research and analysis of natural compounds, etc, with the superior efficiency.

With a chromatography data system, it's easy to control the preparative volume through a fraction collector depending on compounds, ranges, etc from  $\mu\text{L}$  to mL scales upon the system configuration.

It's easy to collect the separated components by compounds, time, etc and monitor them through software. Users can control the amount of separated compounds depending on the analysis condition to get more accurate fraction collection.



[Fig. 3] Sample Preparative Analysis by a Fraction Collector

# Specifications

## ● Solvent Delivery Pump



### ■ YL9110 Plus Quaternary Pump

- Operating principle : Parallel dual-plunger pump, Low-pressure gradient
- Number of Solvents : up to 4 solvents
- Gradient formation : 4-channel mixing valve
- Composition Precision : < 0.1 %
- Composition Accuracy : < 0.5 %



### ■ YL9112 Plus Isocratic Pump

- No mixing valve
- Operating principle : Parallel dual-plunger pump
- Easily upgraded to YL9110 Plus Quaternary pump

### ■ YL9111 Plus Binary Pump

- Operating principle : Double Parallel dual-plunger pump, High-pressure gradient
- Number of Solvents : 2



## ● Pump Specification in Common

- Compressibility compensation : Automatic
- Flow range: - Analytical : 0.001-10 mL/min  
- Semi-prep : 0.01-50 mL/min
- Flow rate accuracy :  $\leq \pm 1\%$  at 1 mL/min
- Maximum pressure

- Analytical : 6000 psi

> Operating range : 0-6000 psi up to 5 mL/min

> Operating range : 0-3000 psi at 5-10 mL/min

- Semi-prep : 3500 psi

> Operating range : 0-3500 psi up to 35 mL/min

> Operating range : 0-2500 psi at 35-50 mL/min

- Automatic prime/purge
- Safety & maintenance : Leak detection, Diagnostics, Error detection

## ● What's upgraded?

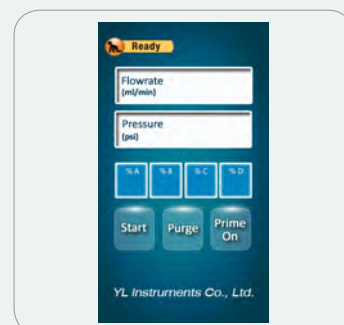
A powerful LCD control pad added to YL911x Plus Pumps provides easy-to-get ready status with a finger tab and monitors a pump without a software. YL9110 Plus Quaternary Pump enables delivery of the superior repeatability with the more stabilized baseline when it's in the gradient condition.

### ■ Smart Control

Setting any factors or pressing 'Purge' button, you can easily set the flow rate or solvent composition. Also, you can monitor the pressure and status of pumps.

### ■ Fully Automatic Prime

You only need to set the solvent composition and press 'Prime On'. It'll automatically flow each solvent at 100% to remove bubbles or change the solvent in the flow path and then get back to the set composition rate to be ready.



● **Detector**



■ **YL9120 UV/Vis Detector**

- Wavelength Range : 190-900 nm
- Dual Wavelength Detection
- Data collection rate : up to 50Hz
- Light Source : Deuterium lamp & tungsten lamp
- Noise level :  $< \pm 0.35 \times 10^{-5}$  AU , 254 nm, dry cell
- Drift :  $< 1 \times 10^{-4}$  AU/hr
- Bandwidth : 5 nm
- Wavelength Accuracy :  $\pm 1$  nm
- Wavelength Precision :  $\pm 0.1$  nm
- Linearity :  $> 99.5$  % for 2.5 AU (acetone, 254 nm)
- Path Length : 10 mm ( Analytical cell ) / 3 mm ( Semi-prep cell )
- Cell Volume : 10  $\mu$ L ( Analytical cell ) / 5  $\mu$ L ( Semi-prep cell )



■ **YL9160 PDA Detector**

- Slit Bandwidth : 1.7 nm
- No. of PDA Diode : 1024 (8 Channels)
- Pixel Resolution : 0.9 nm
- Wavelength : 190~950 nm
- **Analytical Cell**
  - Path-length : 10 mm
  - Pressure :  $< 1500$  psi
  - Volume : 13  $\mu$ L
- **Semi-prep cell**
  - Path-length : 3 mm
  - Pressure :  $< 1500$  psi
  - Volume : 5  $\mu$ L
- Noise Level :  $< \pm 2 \times 10^{-5}$  AU (Empty Cell, 1 sec Rise Time, 254 nm)
- Drift :  $< 2 \times 10^{-4}$  AU/hr (Baseline Correction), 0.001AU/hr (Room Temp)
- Wavelength Accuracy :  $< 1$  nm (HY-1 Holmium Oxide Filter)
- GLP Compliance: - Photometric Accuracy, Linearity, Noise Level, Drift  
- System Check



■ **YL9170 Refractive Index Detector**

- RI Range : 1.00 ~ 1.75 RIU
- Noise :  $\leq 5 \times 10^{-9}$  RIU (Analytical) /  $\leq 10 \times 10^{-8}$  RIU (Semi-prep)
- Flow Cell Volume : 9  $\mu$ L (Analytical) / 7  $\mu$ L (Semi-prep)
- Cell pressure : 6 kg/cm<sup>2</sup> (84 psi)
- RS232 Control



■ **YL9181 ELSD (Evaporative Light Scattering Detector)**

- Highly Sensitive
- Advanced Research
- Cooling Down to 10°C for Chamber
- Patented Thermo-Split : Vapor Phase Control for optimum sensitivity
- Very low detector volume resulting in the smallest peak within 3 sec.
- A single multi-flow, nebulizer for use with micro-bore to semi-preparative flow rates.

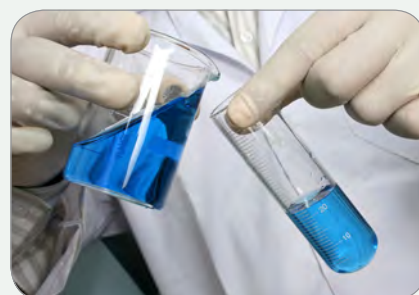
### ● Other Detectors

#### ■ Electrochemical Detector(ECD)

ECD is a detector for HPLC applied to variable analyses such as biogenic amines, phenols, vitamins, DNA adducts, inorganics and amino acids.

#### ■ Fluorescence Detector(FLD)

FLD is a highly sensitive, scanning fluorescence detector for liquid chromatography. It provides exceptional optical performance and operational flexibility for routine and trace analysis.



### ● Vacuum Degasser

#### ■ YL9101 Vacuum Degasser

- Number of channel : 4 Channels
- Maximum flow rate : 10 mL/min per channel  
> 0 ~ 2.0 mL/min per channel for 70 % Gas Removed from Methanol
- Internal volume per channel : 925  $\mu$ L per channel
- Materials in contact with solvent : Teflon AF and PEEK



### ● Column Compartment

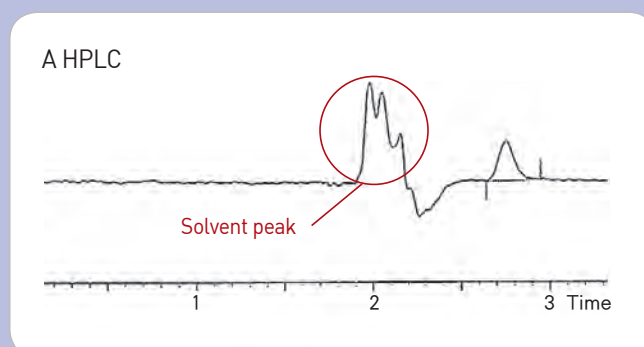
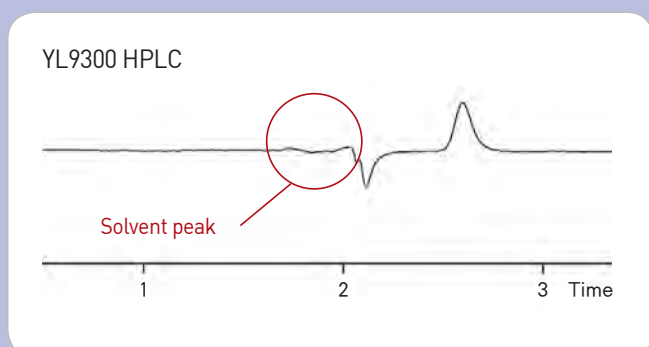
#### ■ YL9131 Column Compartment

- Temperature range : 4 °C (Cooling) - 90 °C
- Temperature stability :  $\pm$ 0.05 °C
- Temperature accuracy :  $\pm$ 0.5 °C
- Temperature programs : 40 Steps
- Column capacity : - Analytical : Max. 3 ea of 30 cm column(Max. OD 18 mm)  
- Semi-prep : Max. 2 ea of 30 cm column
- Heat-up time : 16 minutes from 4 °C to 80 °C
- Cool-down time : 13 minutes from 80 °C to 4 °C
- Column switching : max. two automatic 6-port valve (optional)



# YL9300 HPLC (High Performance Liquid Chromatograph)

YL9300 HPLC is an integrated HPLC system in a compact design including a vacuum degasser (mixer), quaternary pump and UV/Vis detector at a competitive price. The focus corrected optical design efficiently reduces mobile phase RI effect and provides enhanced baseline stability with a substantially minimized noise level especially in short wavelength range, which brings decreased solvent related peaks.



[ Comparison of a solvent peak influence ]

## ■ Compact Design

- Integrated LPG(Low Pressure Gradient) HPLC system
- Simple maintenance: Pump & Vacuum Degasser modules in a sliding drawer

## ■ Perfect Performance

- Increased mobile phase composition efficiency
- Decreased solvent peak influence
- Narrow spectral bandwidth
- Substantially stabilized baseline with minimized noise level

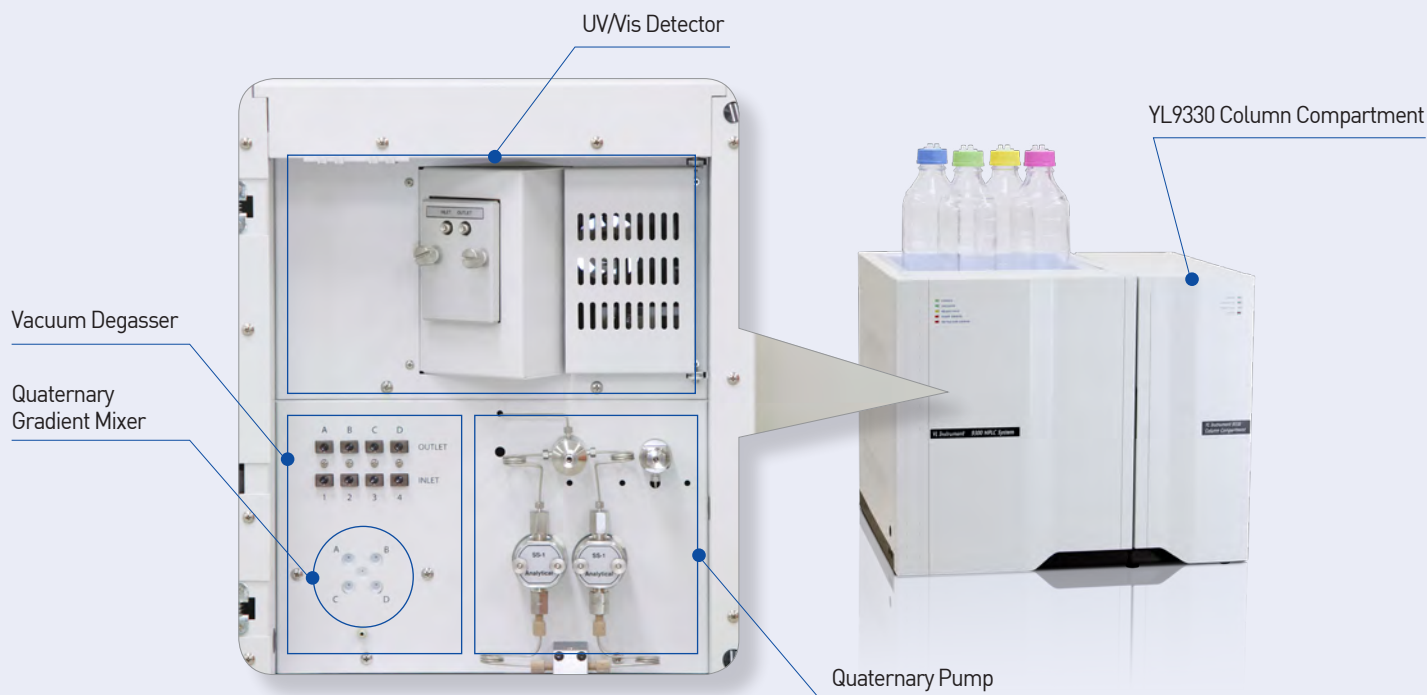
## ■ Impact to Competitors

- Competitive or even lower price than others
- High speed data process by network (LAN) communication
- Low maintenance cost





# YL9300 HPLC (High Performance Liquid Chromatograph)



## ■ Vacuum Degasser

- Number of channel: 4 CHs
- Maximum flow rate: 10 ml/min per channel
- Internal volume per channel: 925 ul per channel
- Solvent contact materials: Teflon AF, PEEK and Glass-filled PTFE

## ■ Quaternary Pump

- Flow range: 0.001-10 ml/min
- Flow rate accuracy:  $\leq \pm 1\%$  at 1 ml/min
- Flow rate precision:  $< 0.1\%$  RSD at 1 ml/min
- Number of eluent lines: 4
- Pressure pulsation:  $\leq \pm 0.5\%$  at 1 ml/min

## ■ UV/VIS Detector

- Wavelength range: 190~600 nm (Standard) /190~900 nm (Option)
- Spectral bandwidth: 5 nm
- Wavelength accuracy:  $\pm 1$  nm
- Wavelength precision:  $\pm 0.1$  nm
- Linearity:  $> 99.5\%$  at 2.5 AU (Acetone, 254 nm)
- Noise level:  $< \pm 0.35 \times 10^{-5}$  AU, 254 nm, dry cell
- Drift:  $< 1 \times 10^{-6}$  AU/hour

## ■ System Information

- Data communications: LAN
- Dimension: 375 X 470 X 545 mm (W X H X D)
- Weight: 27 Kg
- Safety & maintenance: Leak detection, Diagnostics, Error detection
- Power consumption: 150 W

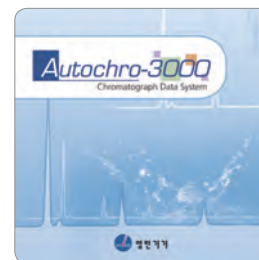
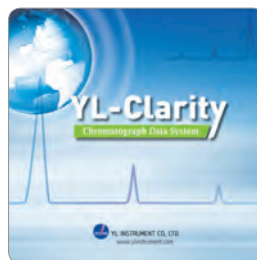
## ■ YL9330 Column Compartment

- Temperature range : 4°C (Cooling) - 90 °C
- Temperature stability :  $\pm 0.05^\circ\text{C}$
- Temperature accuracy :  $\pm 0.5^\circ\text{C}$ , with 2-point temp. calibration
- Temperature programs : 40 Steps
- Column capacity : three columns up to 300mm length  
(max OD: up to 18mm)  
Column switching (Option): automatically 6-port SS(PEEK)  
valve up to 2 ea
- Communications: LAN
- Safety & maintenance : Leak detection, Diagnostics,  
Error detection
- Dimensions : 185 x 476 x 480mm (W x H x D)
- Line Voltage : 100-240VAC,  $\pm 10\%$ , automatic voltage selection
- Line frequency : 50/60Hz,  $\pm 5\%$
- Power consumption : 150W

# Powerful and Intuitive Control

## • Features

The sophisticated YL-Clarity and Autochro-3000 data system are easy to use and offer extensive data management plus full control of the entire YL9100 HPLC products and YL6500GC. The software is designed for 21 CFR Part 11 Compliance and through full compatibility with MS Windows OS seamlessly handles data processing and instrument control using an ultra-reliable LAN interface.



## • 21 CFR Part 11 compliance

### ■ User accounts

YL-Clarity sets up access rights and passwords (including their parameters e.g., minimum length, validity, etc.). Each user can define the appearance of their own station.

### ■ Audit trail

It records selected events and operations into a special file and selected operations directly into a chromatogram.

### ■ Electronic signature

Each chromatogram can be signed electronically. Signature selection is based on the username or the signature certificate.

## • Data Acquisition

### ■ Overlay

YL-Clarity simultaneously displays a virtually unlimited number of chromatograms and their mathematical modification; for example, mutual deductions or derivations of any order.

### ■ Measuring

Simultaneous data acquisition from up to four independent chromatographs, each chromatograph can acquire data from up to 12 detectors.

## • Optional Module (YL-Clarity)

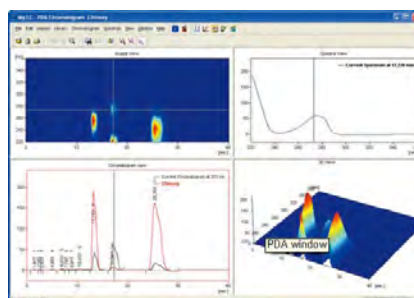
### ■ SST (System Suitability Test)

The program compares up to 12 selected parameters calculated according to one of three pre-selected methods (USP, EP, and JP). These calculated values are either compared to the users set limit values for each chromatogram separately or together for the selected series.



### ■ PDA Extension

This is to process data that has been acquired from selected photo diode array detectors. The spectral data, together with chromatograms, adds a third dimension to analytical data analysis.



## • Reliable and Convenient Data Management

### ■ Integration

There are extensive possibilities to optimize integration. The integration parameters can be changed by entering global parameters or interactively, through direct graphic modification of the baseline.

### ■ Calibration

Internal and external standard calculation methods, calibration of groups of peaks and reference peaks method for better identification.

### ■ Post run

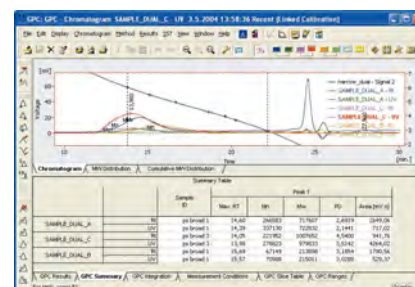
YL-Clarity automatically displays, prints, exports and starts other programs after the completion of a measurement.

### ■ User calculations

Users can define custom calculations in the Result and Summary tables. Using the integrated editor you can create your own columns from original columns and individual mathematical functions.

### ■ GPC Extension

This provides interactive and automated GPC analysis, including recalibration and GPC reporting, as well as simplifies the retrieval of GPC data.



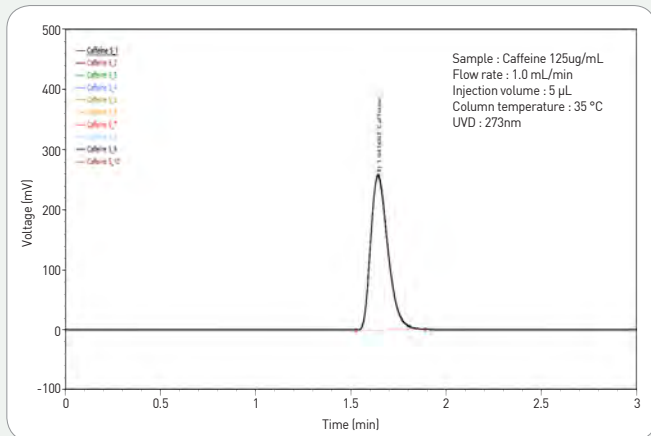
## Autosampler

### YL9150 Plus LC Autosampler

Newly launched YL9150 Plus LC Autosampler developed by our own technology can provide the enhanced efficiency of analysis with fast injection and enlarged sample capacity. The spray-type rinsing reduces the carry-over by washing off the contamination and the direct injection leads the low sample consumption. The leak sensor and the automatic tray sensor ensure the process safety as well as the LED inside of equipment allows users to see its operation.



- Sample Capacity : Up to 120 samples (2 ml vial), 80 samples (4 ml vial)
- Carry Over : < 0.04% with standard wash  
Typically < 0.02% with extra wash
- Reproducibility : RSD < 0.3% for full loop injections  
RSD < 0.5% for partial loopfill injections (Injection volume > 5 µL)  
RSD < 1.0% for µL pick-up injections (Injection volume > 5 µL)
- Injection Volume : 1 µL - 400 µL, with 0.1 µL increment
- Sample Cooling : 4 °C ~ 40 °C (option)



		Area	Height	Retention Time
1	Caffeine 5_1	1621.486	256.337	1.642
2	Caffeine 5_2	1633.14	258.096	1.643
3	Caffeine 5_3	1629.508	257.8	1.643
4	Caffeine 5_4	1626.078	257.15	1.643
5	Caffeine 5_5	1624.189	257.132	1.643
6	Caffeine 5_6	1630.313	257.965	1.643
7	Caffeine 5_7	1620.075	256.408	1.643
8	Caffeine 5_8	1629.025	257.751	1.643
9	Caffeine 5_9	1623.78	256.916	1.643
10	Caffeine 5_10	1633.378	258.686	1.643
Sum		16270.97	2574.241	16.428
Average		1627.097	257.424	1.643
SD		4.68	0.761	0.001
%RSD		0.288	0.296	0.034



## Manual Injector

### Rheodyne 7725i / 9725i

- Industry standard manual injector
- Analytical : 7725i(SUS) and 9725i(PEEK)
- Semi-prep : 3725i

## Column Switching Valve

### MX Series II™ (Stand-alone)

MX Series II™ automated high-pressure fluidic valves provides productivity enhancing solutions for today's demanding analytical methods. Combine MX Series II modular valves with your current instrument to support complex fluid switching and sample injection needs.

### TitanHP™

TitanHP™ consists of an integrated driver/actuator and a removable liquid-end (Rapid Replacement Pod™) to provide a single, flexible space-saving design. Eliminating the need for development of an internal board and firmware means shorter product development cycles and reduced time-to-market.

DuraLife® wear surfaces extends valve lifetime, which means reduced field service and more customer analysis time between replacements of the wetted surfaces.

## ● SP930D Solvent Delivery Pump



SP930D Solvent Delivery Pump is to be provided for the use of process where requires to supply accurate and precise solvent flow rate as a stand-alone unit. It can also be added to other HPLCs easily and controlled by an intuitive key pad.

- Operating flow range: Analytical 0.001-16.0 mL/min
- Flow precision:  $< \pm 0.1$  % RSD at 1 mL/min
- Flow accuracy:  $< \pm 1$  %
- Operating pressure: 0-6,000 psi

## ● YL9200 Series Single Pump



YL9200 series single head pump provides greatly stable flow rate at high pressure up to 6,000 psi to where there is a need of pump for the basic use at economical price. It is provided in 4 models to meet the requirement of various applications.

### ■ System information

- Communications : RS232C, Mark in/out, Remote start/stop
- Power : AC100 ~240VAC  $\pm 10\%$
- Display : LCD, 12-key

## ● YL Fraction Collector (YL FC1 & FC2)



YL fraction collector is to be used for the isolation, purification and collection of a valuable samples in the pharmacology, material research and analysis of natural compounds, etc. It can collect peaks of interest separately using any combination of slope, level, and time.

- Collecting peaks of interest separately using any combination of slope, level, and time.
- Collecting uniform fractions by time, drop count, or pumped volume.
- Easy to use symbolic touch screen interface

# Optimized HPLC Post-Column Derivatization System

Pickering Laboratories, Inc., California, USA, a leading company of post-column derivatization chemistries and technology, has made a contract to supply the post-column derivatization system based on our YL9100 Plus HPLC system. The PINNACLE PCX combined with YL9100 Plus HPLC system offers the complete package of chemicals, columns, methods and post-column systems and reflects the ease of use, reliability and ruggedness you have come to expect.



- Powerful Software Control
- Electronic Syringe Pump & Valve
- Flexible Reactor
- Column Heater Fast & Stable
- Usability Design
- Special Columns & Chemistries

## • Chromatograms

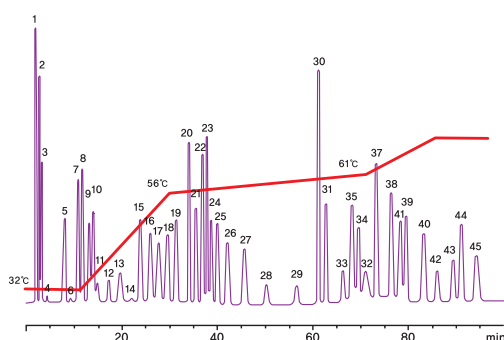


Figure 1. High-efficiency Lithium for Physiological samples using temperature gradient

- |                                    |                                   |
|------------------------------------|-----------------------------------|
| 1. Phosphoserine                   | 24. Isoleucine                    |
| 2. Taurine                         | 25. Leucine                       |
| 3. Phosphoethanolamine             | 26. Tyrosine                      |
| 4. Urea                            | 27. Phenylalanine                 |
| 5. Aspartic acid                   | 28. $\beta$ -Alanine              |
| 6. Hydroxyproline                  | 29. $\beta$ -Amino-i-butyric acid |
| 7. Threonine                       | 30. Homocystine                   |
| 8. Serine                          | 31. $\gamma$ -Aminobutyric acid   |
| 9. Asparagine                      | 32. Tryptophan                    |
| 10. Glutamic acid                  | 33. Ethanolamine                  |
| 11. Glutamine                      | 34. Hydroxylysines                |
| 12. Sarcosine                      | 35. Ammonia                       |
| 13. $\alpha$ -Amino adipic acid    | 36. Creatinine                    |
| 14. Proline                        | 37. Ornithine                     |
| 15. Glycine                        | 38. Lysine                        |
| 16. Alanine                        | 39. Histidine                     |
| 17. Citrulline                     | 40. 3-Methylhistidine             |
| 18. $\alpha$ -Amino-n-butyric acid | 41. 1-Methylhistidine             |
| 19. Valine                         | 42. Anserine                      |
| 20. Cystine                        | 43. Carnosine                     |
| 21. Methionine                     | 44. Homocarnosine                 |
| 22. Allo-isoleucine                | 45. Arginine                      |
| 23. Cystathionine                  |                                   |

## • Specifications

### ■ Reagent Pump

- Pulse free syringe pump
- Single piece ceramic barrel
- Programmable flow rate
- Flow range : 50 - 1500  $\mu$ L/min
- Automatic piston wash
- Automatic reagent flush cycle

### ■ Reactor

- Heated reactor for temperature from 5  $^{\circ}$ C above ambient to 130  $^{\circ}$ C
- Easy replacement coil cartridges
- Range of reactor dwell volumes; 0.1 mL to 3 mL

### ■ Column Heater

- Programmable temperature gradient
- Easy Column access

### ■ Safeguards

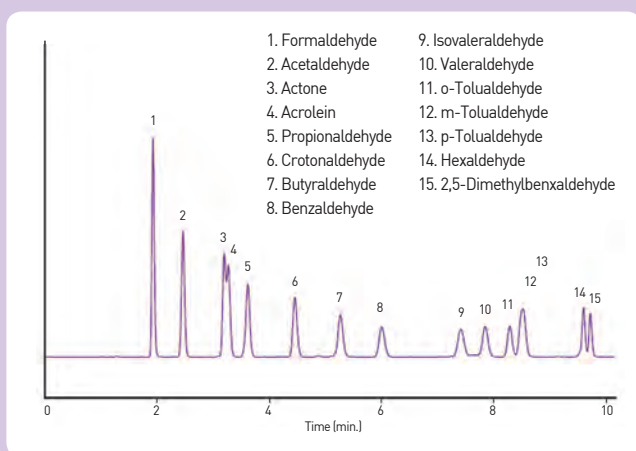
- In line check valve : prevent reagent back flow
- Replaceable column & reagent filters
- Post column system over pressure
- Back-pressure regulator: Applies 7 bar (100 psi) to the detector flow cell outlet (waste) to prevent detector noise and precipitation due to out-gassing or boiling

# Versatile Dedicated Analyzers

We provide customized systems with analysis methods and application that completely meet analysis purpose and requirement for convenience in your lab.

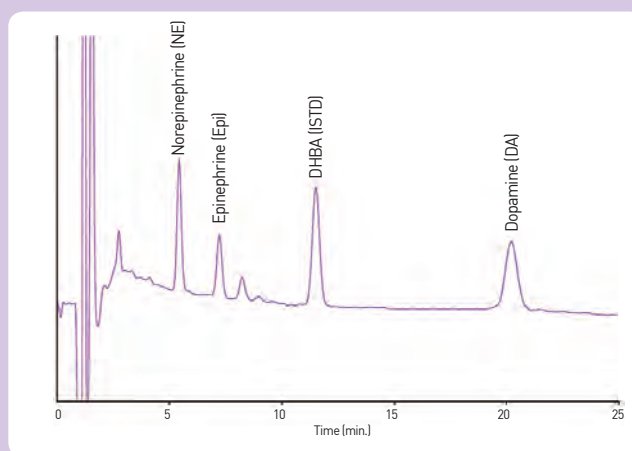
## Formaldehyde Analyzer

It delivers the optimum solution for derivatization analysis of formaldehyde with the appropriate system configuration according to Indoor Air Quality Management which is getting interested in recent years.



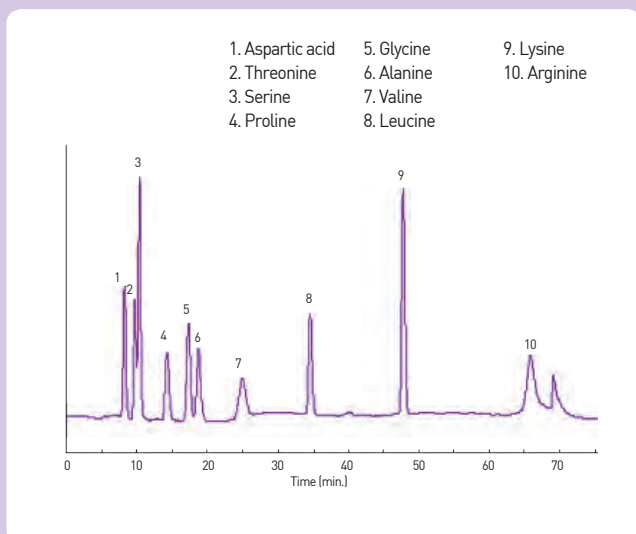
## Catecholamine Analyzer

It provides all the solutions such as a sample preparation, a short time to stabilize the ECD (Electrochemical detector), setting for optimum condition, keeping the sensitivity and replacement and cleaning of cell.



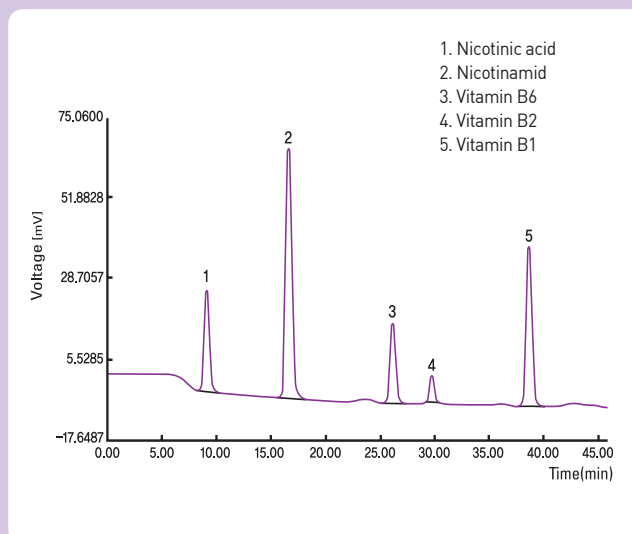
## Amino Acid Analyzer

YL Amino Acid Analyzer is to analyze the first or second amino acids with a variety of solutions in an easy way. With a superior sensitivity, this enables to detect derivatized natural amino acids in animal tissues, broths, fruits and beverage juices and hydrolyzed amino acids in protein, collagen, peptides, and processed foods.



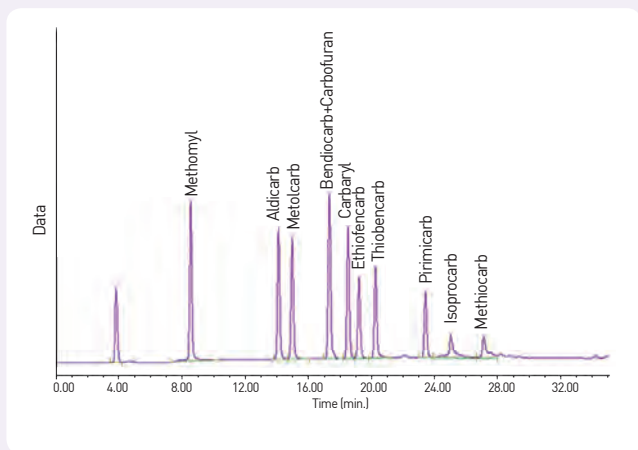
## Vitamin Analyzer

Vitamins are unstable compounds, which are easily oxidized and destroyed during sample preparation procedures. This specified vitamin analyzer is optimized for the analysis of both water-soluble and fat-soluble vitamins by supplying entire solutions.



## ■ Carbamate Analyzer

The analysis of pesticide using Post-Column derivatization gives analysis and quantitative analysis by automatic sample preparation at the same time.

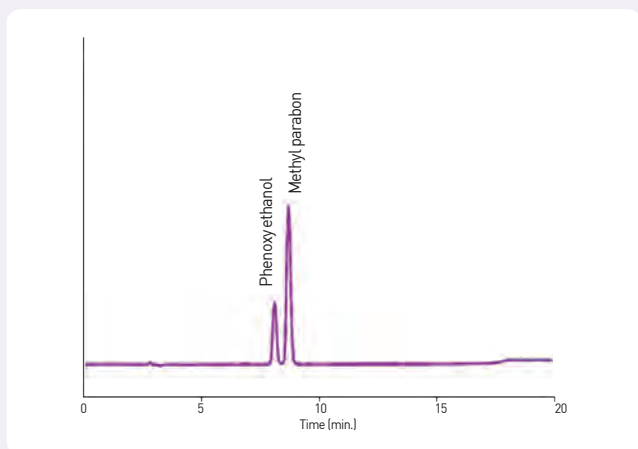


## ■ Methylparaben Analyzer

YL Methylparaben Analyzer efficiently analyzes Methylparaben and Phenoxyethanol which are very commonly used as preservatives for cosmetics, drugs and other skincare products but they may cause toxicity at higher concentration to human body.

For they have an absorbance at UV/Vis wavelength range, these are usually analyzed by HPLC after extracted by organic solvents such as Methanol or DMF.

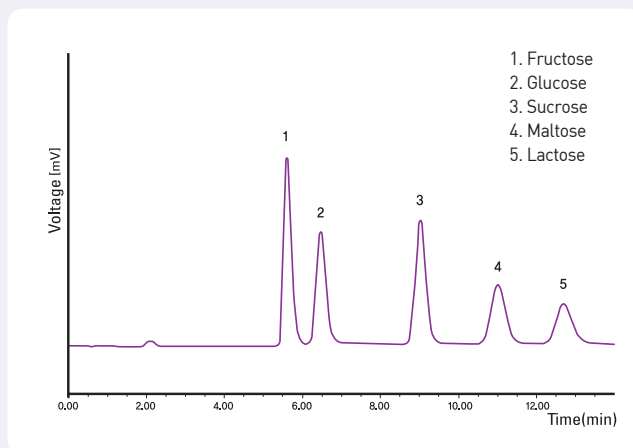
Our dedicated analyzer for Methylparaben/Phenoxyethanol supplies a photo diode array detector to provide accurate results separating all other impurities in the sample.



## ■ Sugar Analyzer

Sugar, as a major component of food, is very soluble in water and it has various types of stereoisomers. Commonly there are many testing limitations such as low peak-resolution due to various stereoisomers, poor column durability due to water-soluble solvent and limited usage of detectors. Especially, the RI detector has low sensitivity and no gradient mode.

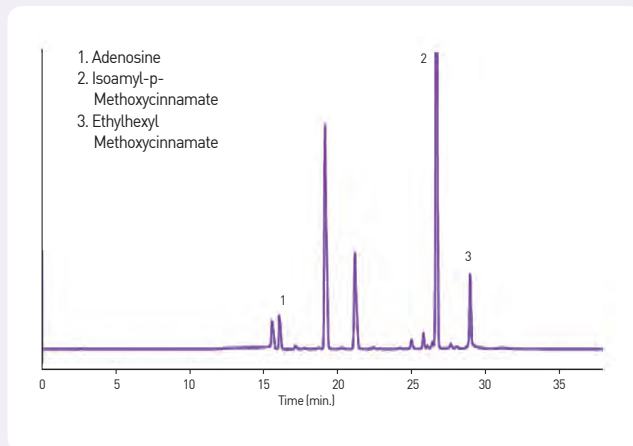
YL Sugar Analyzer provides an accurate column analysis result and a method of making solvents with the use of ELSD (Evaporative Light Scattering Detector) to remove these problems and can be usefully applied to analyze these compounds and determine their quantitative analysis.



## ■ QC Analyzer

In quality control laboratories, most of QC programs are to ensure that the analysis results are accurate, reliable and reproducible to reach the required specification while take substantial time.

YL QC analyzer using an autosampler reduces the analysis time and strengthens the convenience of use by an intuitive chromatography data system to increase the analysis efficiency.





**YL9100 Plus<sup>+</sup> / YL9300**  
High Performance Liquid Chromatograph



**YL Instruments Co., Ltd.**

60, Anyangcheondong-ro, Dongan-gu, Anyang-si,  
Gyeonggi-do, 14042, Korea  
TEL: 82-31-428-8700 / FAX: 82-31-428-8787  
E-mail: [export@younglin.com](mailto:export@younglin.com)  
Homepage: : [www.younglin.com](http://www.younglin.com)



These Products are manufactured by Young Lin  
ISO 9001-certified facility that is periodically audited  
by the registering body to ensure compliance